

Woodquay Centre - Dublin City Walls

Ballingarry, Co. Limerick
Tel: 069-68116

Overview



- **The Woodquay Centre incorporates the original Hiberno Viking City Wall dating from 1100AD.**
- **Design & manufacture of BMS controls system for this venue.**
- **Includes full set of graphics on a BMS supervisor PC**
- **Includes alarm logging and data logging on the BMS supervisor PC**

Overview



- Includes air handling control of city wall space and air handling control of exhibition centre
- Includes sump pump monitoring and leak detection monitoring.
- Includes controls for the Air Conditioning Units
- Includes monitoring of Close Control Units for the Hiberno Viking City Wall

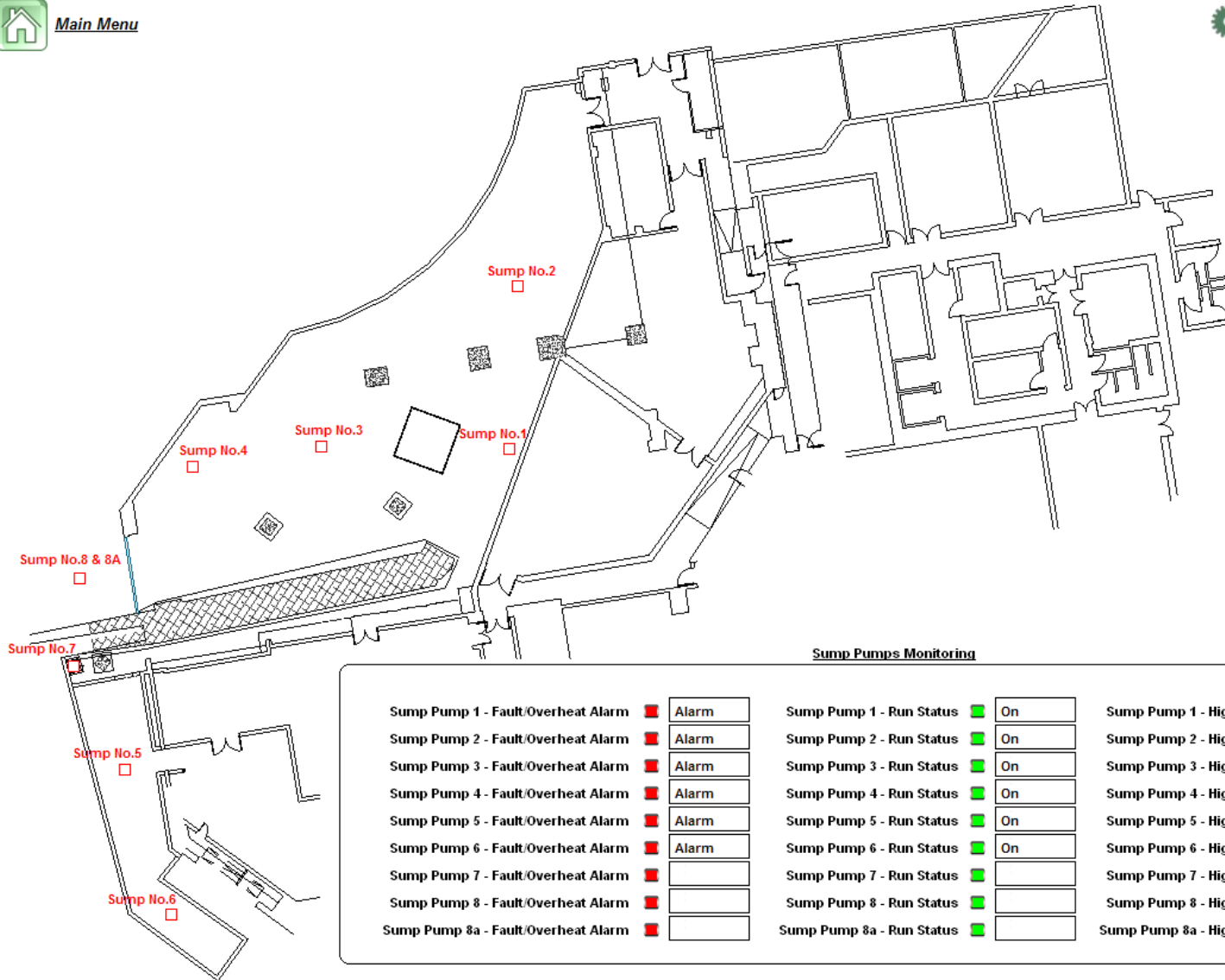


[Main Menu](#)

 **Start-up Page**



-  *LPHW System*
-  *Domestic Hot Water System*
-  *AHU-01 - Serving Main Area*
-  *AHU-02 - Serving Reception/Lobby Area*
-  *Sump Pumps Monitoring*
-  *Leak Detection Monitoring*
-  *City Wall and A/C Units*



Sump Pumps Monitoring

Sump Pump 1 - Fault/Overheat Alarm	<input checked="" type="checkbox"/>	Alarm	Sump Pump 1 - Run Status	<input checked="" type="checkbox"/>	On	Sump Pump 1 - High Level Alarm	<input checked="" type="checkbox"/>	Alarm
Sump Pump 2 - Fault/Overheat Alarm	<input checked="" type="checkbox"/>	Alarm	Sump Pump 2 - Run Status	<input checked="" type="checkbox"/>	On	Sump Pump 2 - High Level Alarm	<input checked="" type="checkbox"/>	Alarm
Sump Pump 3 - Fault/Overheat Alarm	<input checked="" type="checkbox"/>	Alarm	Sump Pump 3 - Run Status	<input checked="" type="checkbox"/>	On	Sump Pump 3 - High Level Alarm	<input checked="" type="checkbox"/>	Alarm
Sump Pump 4 - Fault/Overheat Alarm	<input checked="" type="checkbox"/>	Alarm	Sump Pump 4 - Run Status	<input checked="" type="checkbox"/>	On	Sump Pump 4 - High Level Alarm	<input checked="" type="checkbox"/>	Alarm
Sump Pump 5 - Fault/Overheat Alarm	<input checked="" type="checkbox"/>	Alarm	Sump Pump 5 - Run Status	<input checked="" type="checkbox"/>	On	Sump Pump 5 - High Level Alarm	<input checked="" type="checkbox"/>	Alarm
Sump Pump 6 - Fault/Overheat Alarm	<input checked="" type="checkbox"/>	Alarm	Sump Pump 6 - Run Status	<input checked="" type="checkbox"/>	On	Sump Pump 6 - High Level Alarm	<input checked="" type="checkbox"/>	Alarm
Sump Pump 7 - Fault/Overheat Alarm	<input type="checkbox"/>		Sump Pump 7 - Run Status	<input type="checkbox"/>		Sump Pump 7 - High Level Alarm	<input type="checkbox"/>	
Sump Pump 8 - Fault/Overheat Alarm	<input type="checkbox"/>		Sump Pump 8 - Run Status	<input type="checkbox"/>		Sump Pump 8 - High Level Alarm	<input type="checkbox"/>	
Sump Pump 8a - Fault/Overheat Alarm	<input type="checkbox"/>		Sump Pump 8a - Run Status	<input type="checkbox"/>		Sump Pump 8a - High Level Alarm	<input type="checkbox"/>	

Main Menu

Outside Air 5.0°C

Fire Alarm	Alarm
Gas Alarm	Alarm
LPHW Low Pressure Alarm	Alarm
LPHW High Pressure Alarm	Alarm

AHU Override Controls

Boost Active	On
Boost Period	5.0Hours

AHU-01 Time Zone

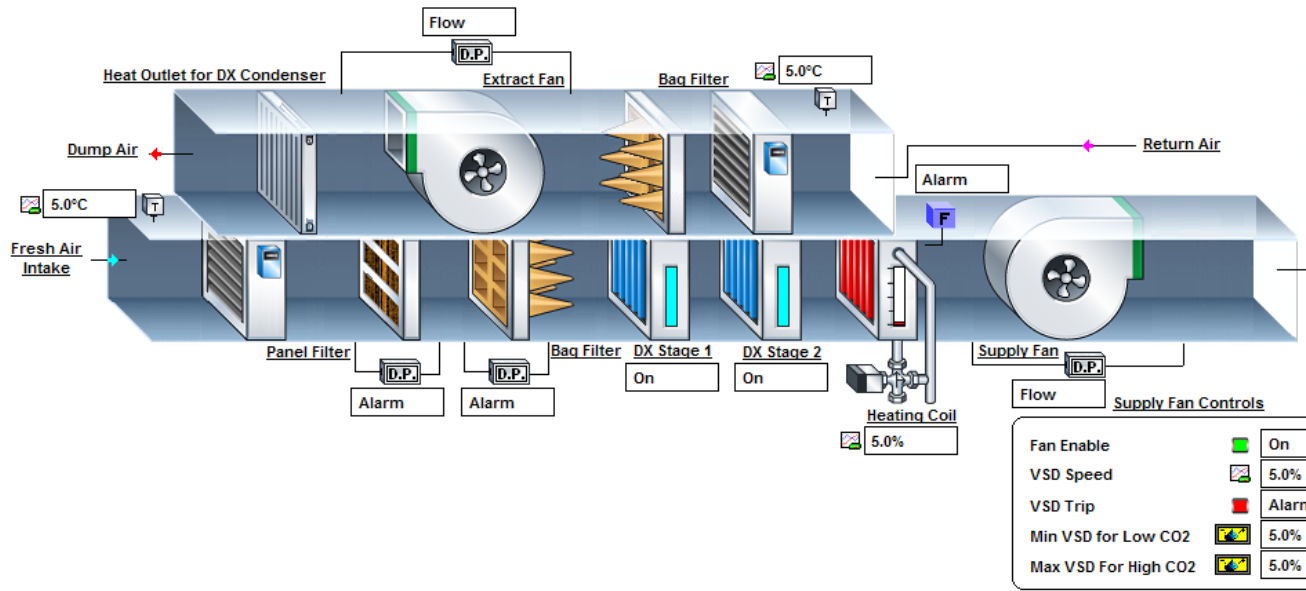
On

Extract Fan Controls

Fan Enable	On
VSD Speed	5.0%
VSD Trip	Alarm
Min VSD for Low CO2	5.0%
Max VSD For High CO2	5.0%

Supply Temperature Limits

Min	5.0°C
Max	5.0°C



Supply Air

CFTemp	5.0°C
T	5.0°C

Main Area Controls

Temp 1	5.0°C
Temp 2	5.0°C
Average Temp	5.0°C
Temp Setpoint	5.0°C
CO2 Sensor 1	5.0PPM
CO2 Sensor 2	5.0PPM
Average CO2	5.0PPM
CO2 High Limit	5.0PPM
Humidity 1	5.0%rh
Humidity 2	5.0%rh

Supply Fan Controls

Fan Enable	On
VSD Speed	5.0%
VSD Trip	Alarm
Min VSD for Low CO2	5.0%
Max VSD For High CO2	5.0%

Further Information



Manutec Limited,
Main Street, Ballingarry, Co. Limerick.
Tel. 069-68144
Fax. 069-68360

Email: info@manutec.ie
Website: www.manutec.ie