

Case Study

GE Healthcare

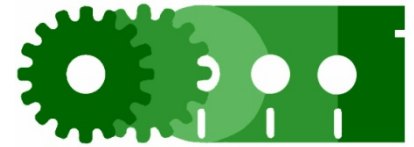
Ballingarry, Co. Limerick
Tel: 069-68144

Overview



- Design and manufacture Form 4 motor control centres complete with intelligent controllers to automatically control air handling units, V.A.V. units, fan coil units, boilers, chillers, compressors and ancillary plant as well process equipment.
- The scope of works included the provision of all pressure and humidity sensors, valves, actuators, stats and other field devices.

Overview



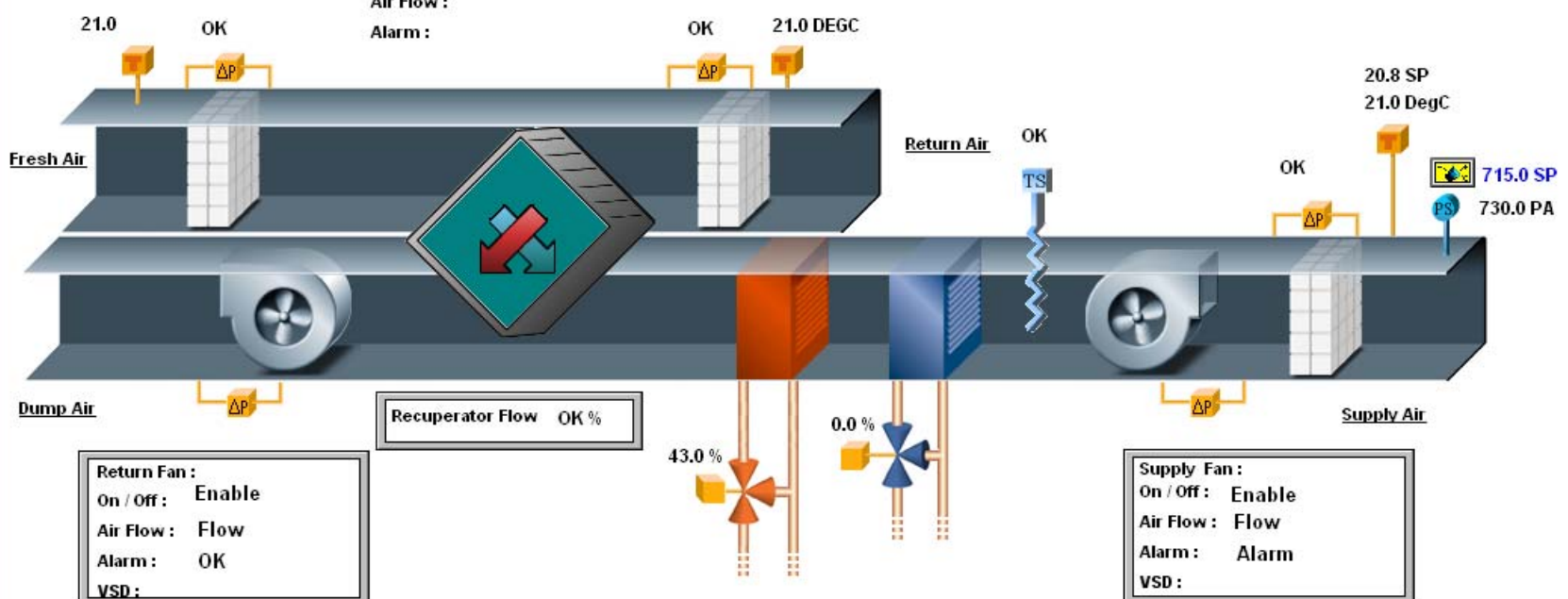
- A centrally located computer networked to all MCCs has a full set of plant dynamic graphics, which allow easy access to all plant controls for setpoint adjustment and alarm logging.
- The entire system is validated with all instruments calibrated.

10 September 2007 13:20:03

Fire Alarm : OK
Time Clock : ON OFF
Override

21.0

Ex Hood Ex Fan :
On / Off :
Air Flow :
Alarm :



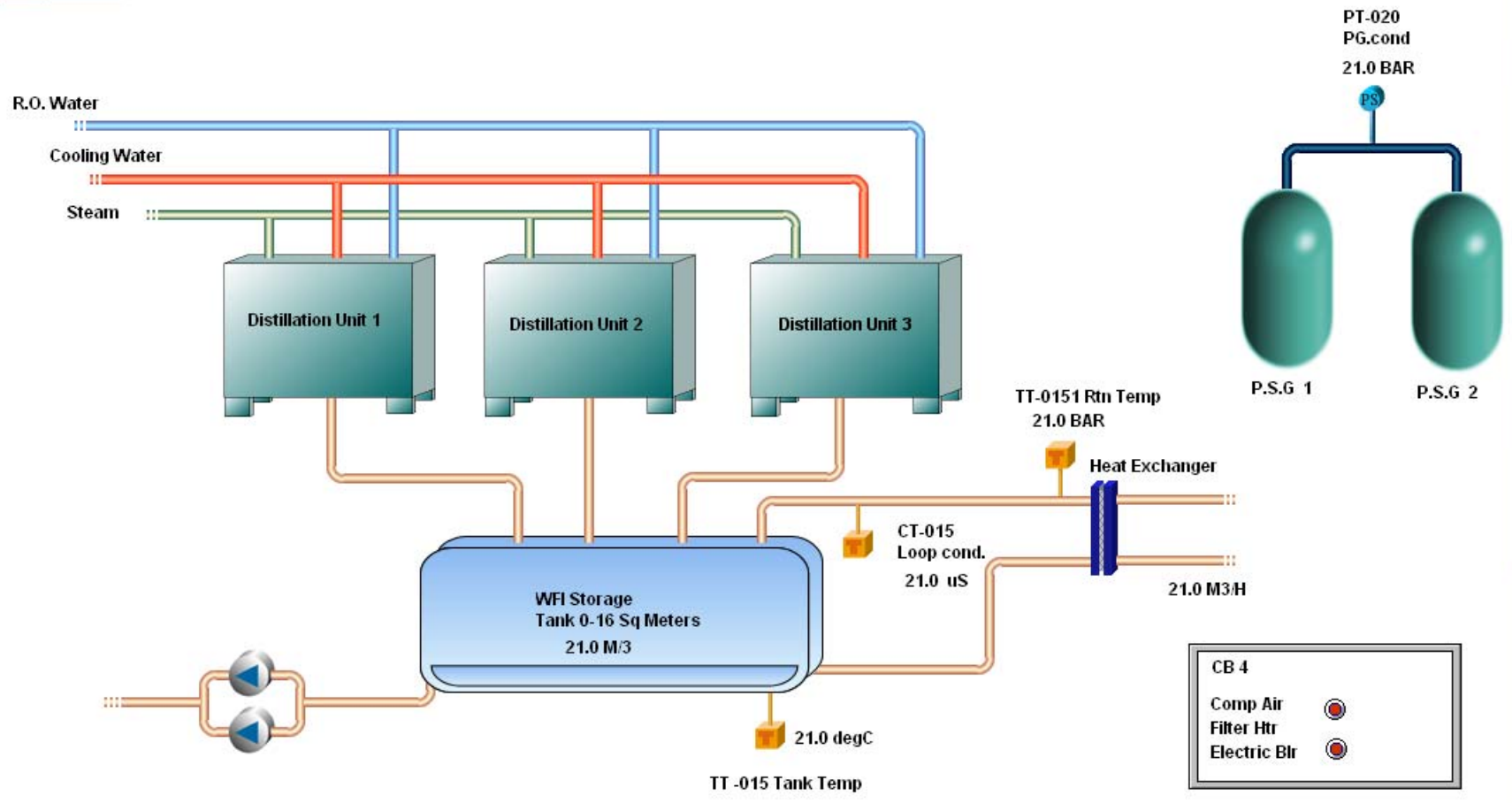
Return Fan :
On / Off : Enable
Air Flow : Flow
Alarm : OK
VSD :

Supply Fan :
On / Off : Enable
Air Flow : Flow
Alarm : Alarm
VSD :

Scanning COM 1 at 19200
CNC COM-Port Not found. All communications are offline.

21.0 DEGC

10 September 2007 13:23:42

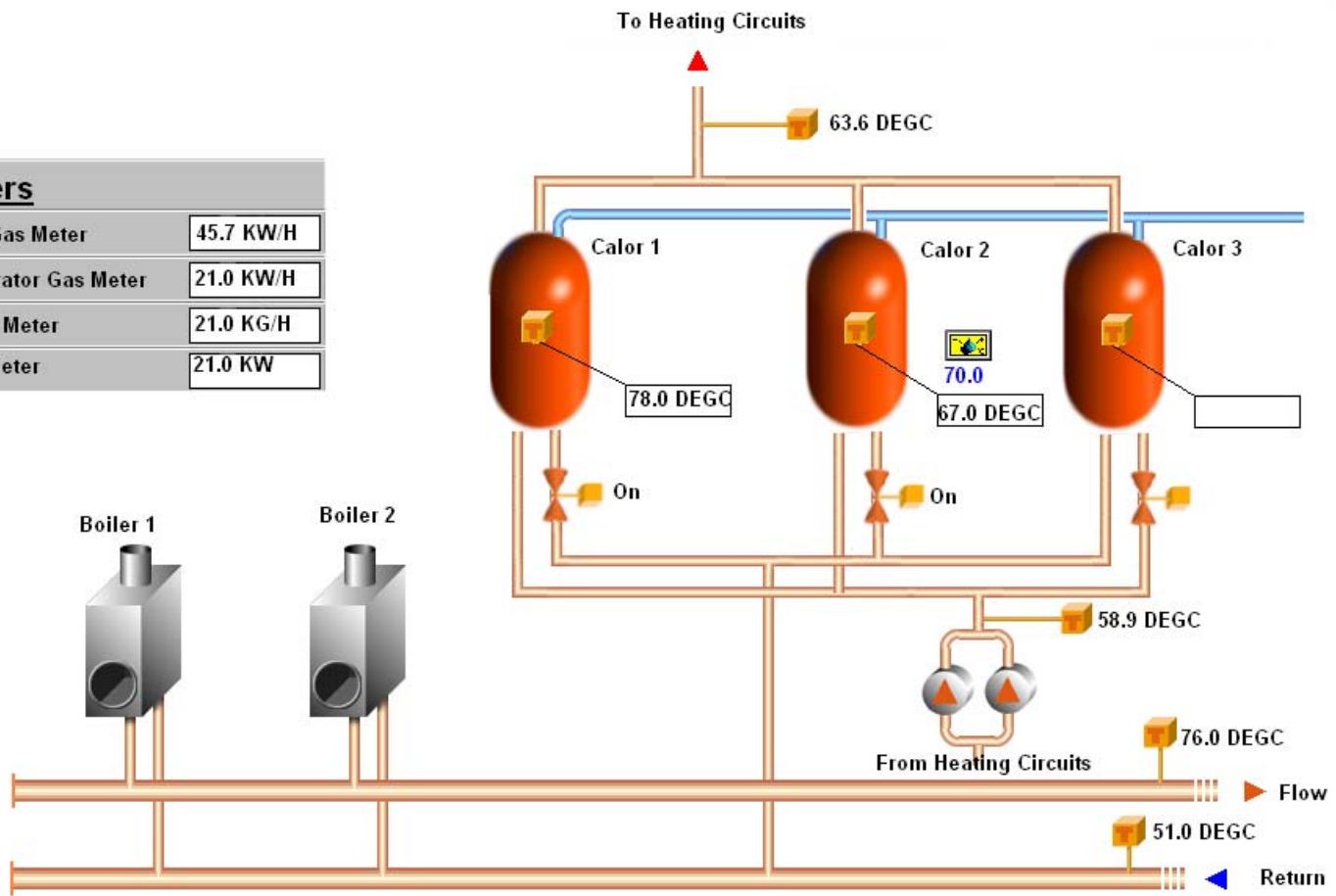


Scanning COM 1 at 2400
CNC COM-Port Not found. All communications are offline.

Boiler House

10/09/07, 13:24:54 21.0 DegC Points List

Meters	
Main Gas Meter	45.7 KW/H
Incinerator Gas Meter	21.0 KW/H
Steam Meter	21.0 KG/H
Heat Meter	21.0 KW



Scanning COM 1 at 2400
CNC COM-Port Not found. All communications are offline.

Further Information



Manutec Limited,
Main Street, Ballingarry, Co. Limerick.
Tel. 069-68144
Fax. 069-68360

Email: info@manutec.ie
Website: www.manutec.ie