

*Manutech*  
L•I•M•I•T•E•D

**St. Paul's VEC  
Secondary School  
Waterford**



Ballingarry, Co. Limerick  
Tel: 069-68116

# Overview



- **Design & manufacture of BMS controls system for the school.**
- **Includes full set of embedded graphics in the controller**
- **Allows any computer on the School network to access the (password protected) BMS system**
- **Advantages that this can be setup on Principals PC, Vice Principals PC, Caretakers PC etc..**

# Overview



- **Cheaper option than supervisor no cost for a license**
- **Allows better scope for energy control with hourly, daily, weekly and monthly data logging of gas meter and water meter**
- **Includes 4 No. radiator circuit controls for the school**
- **Includes boiler modulation controls**



Main Menu





Start-up Page



Boilers Control



Home Economics and Assembly Hall/  
Rooms S1-S7 and E1-E3 Heating Circuits



Woodwork, Metal Work and Art/  
H Rooms and L Rooms Heating Circuits



Metering





Main Menu

**Outside Air**

3.0°C

Outside Frost  Alarm

Header Frost  Alarm

---

Holiday Mode  On

Fire Alarm  Alarm

Gas Alarm  Alarm

LPHW Low Pressure Alarm  Alarm

LPHW High Pressure Alarm  Alarm

**LPHW Flow Temperature Controls**

Calc Setpoint

Min Limit

Max Limit

**Shunt Pump Controls**

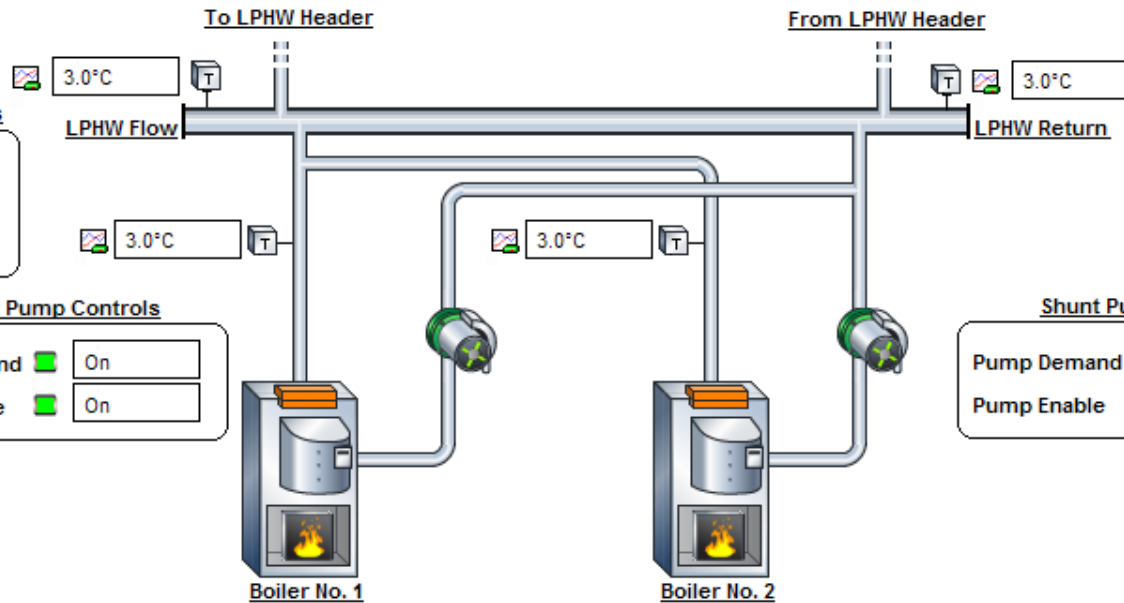
Pump Demand  On

Pump Enable  On

**Shunt Pump Controls**

Pump Demand  On

Pump Enable  On



**Boiler Controls**

Boiler Enable  On

Boiler Lockout  Alarm

Boiler Duty

Boiler Output

Boiler Status

**Boiler Controls**

Boiler Enable  On

Boiler Lockout  Alarm

Boiler Duty  2

Boiler Output

Boiler Status





Main Menu

Outside Air  
  
5.0°C

Outside Frost  Alarm  
Header Frost  Alarm  
  
Holiday Mode  On

Fire Alarm  Alarm  
Gas Alarm  Alarm  
LPHW Low Pressure Alarm  Alarm  
LPHW High Pressure Alarm  Alarm

Home Economics and Assembly Hall

Boost Active  On  
Boost Period 5.0Min  
  
 On  
Time Zone

Space Temp 5.0°C  
Space Setpoint 5.0°C

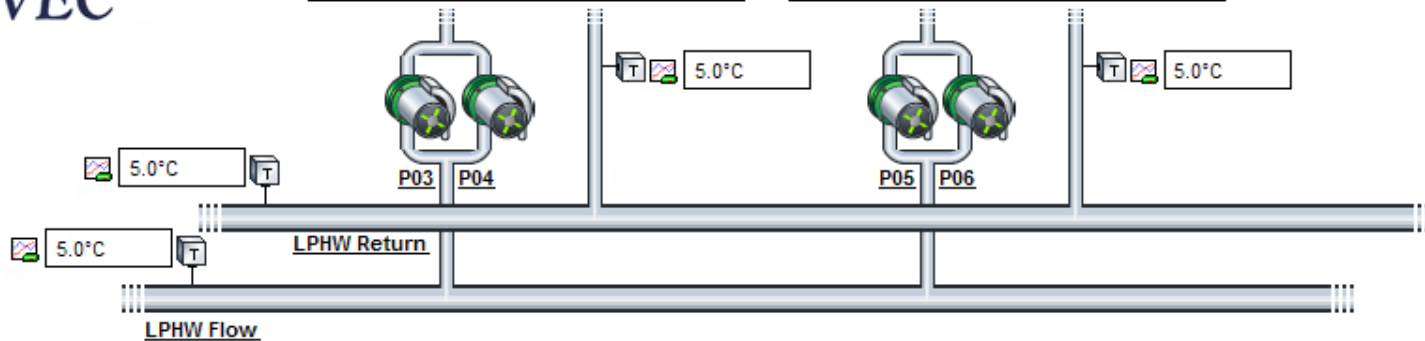
Pump P03 Enable  On  
Pump P04 Enable  On  
Pump P03 Failure  Alarm  
Pump P04 Failure  Alarm  
Current Switch  On  
Failure Reset Reset

Rooms S1-S7 and E1-E3

On  
Time Zone  
Boost Active  On  
Boost Period 5.0Min

Space Temp 5.0°C  
Space Setpoint 5.0°C

Pump P05 Enable  On  
Pump P06 Enable  On  
Pump P05 Failure  Alarm  
Pump P06 Failure  Alarm  
Current Switch  On  
Failure Reset Reset





Main Menu

Gas Metering

Hourly Rate		<input type="text" value="3.0m3/h"/>
Daily Total		<input type="text" value="3.0m3"/>
Weekly Total		<input type="text" value="3.0m3"/>
Monthly Total		<input type="text" value="3.0m3"/>
Cumulative Total		<input type="text" value="3.0m3"/>
Cumulative Reset		<input type="button" value="Reset"/>

Water Metering

Hourly Rate		<input type="text" value="3.0L"/>
Daily Total		<input type="text" value="3.0L"/>
Weekly Total		<input type="text" value="3.0L"/>
Monthly Total		<input type="text" value="3.0L"/>
Cumulative Total		<input type="text" value="3.0L"/>
Cumulative Reset		<input type="button" value="Reset"/>





# Further Information



Manutec Limited,  
Main Street, Ballingarry, Co. Limerick.  
Tel. 069-68144  
Fax. 069-68360

Email: [info@manutec.ie](mailto:info@manutec.ie)  
Website: [www.manutec.ie](http://www.manutec.ie)