

Manutec
L•I•M•I•T•E•D

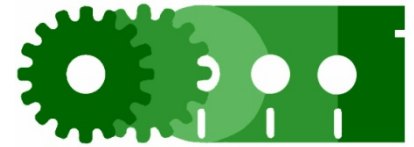
Wyeth Nutritionals

Overview



- Design and manufacture of control system for new airlocks to productions areas.
- The project involved a high degree of containment, requiring the installation of high accuracy differential pressure transducers to measure conditions and variable speed drives to maintain correct relative pressure set-points.
- The system controls (interlocks) door entry and exit to the airlock to ensure that a strict pressure cascade regime is maintained. Entry to the airlock is granted by swipe card access.

Overview



- Incorporated in each airlock are stainless door entry face plates which have emergency break door exit units. Also located on these faceplates are alarm annunciators, which provides the operator a clear view of the related plant.
- These conditions of the airlocks are monitored by the software supervisory suite, the recorded information is stored in a secure database which conforms to 21 CFR Part 11.
- The network for this BMS is based on Cat 6 Ethernet structure.

12.0 degC

Supply Duct Limits

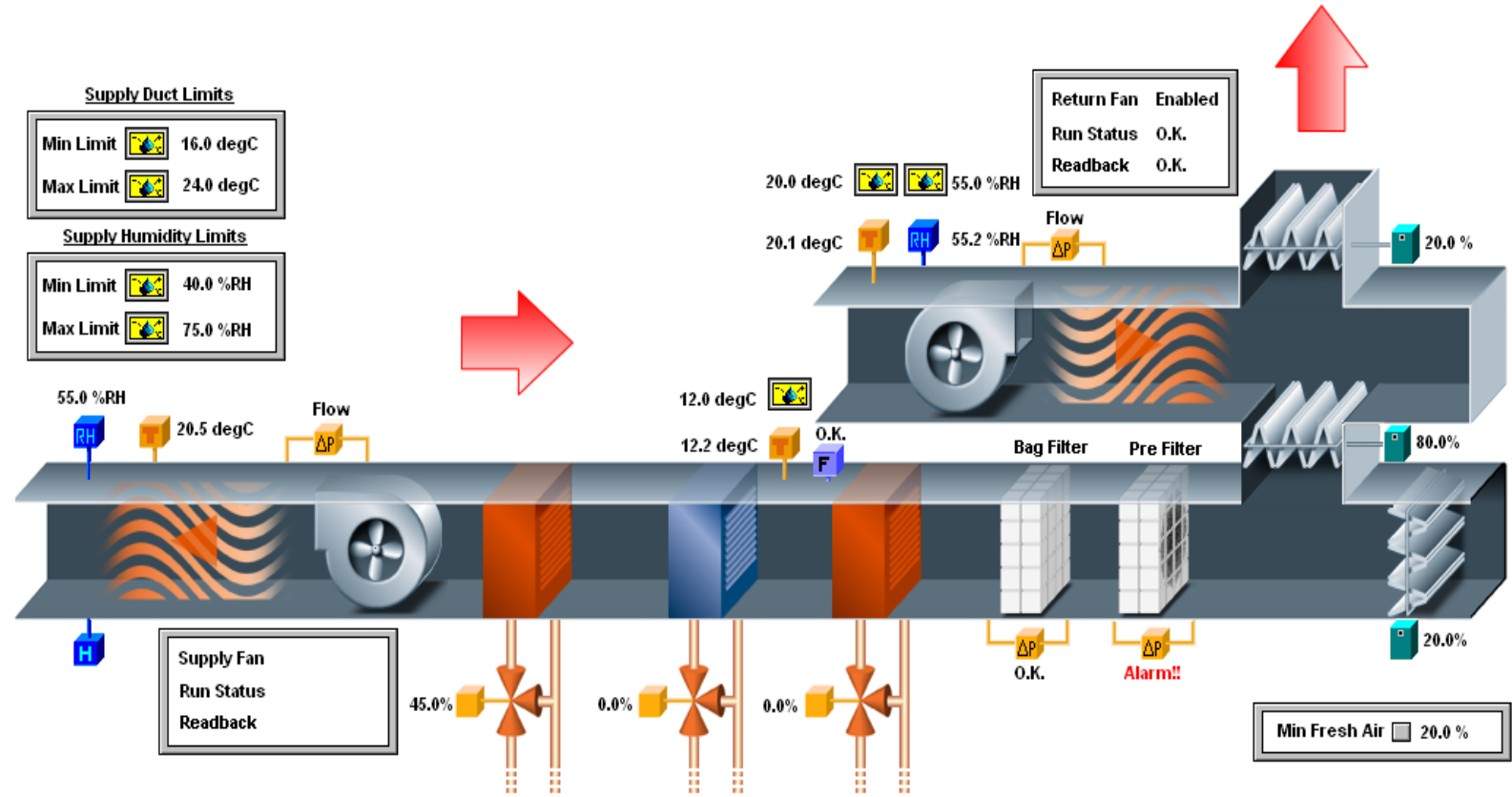
Min Limit 16.0 degC

Max Limit 24.0 degC

Supply Humidity Limits

Min Limit 40.0 %RH

Max Limit 75.0 %RH



Further Information



Manutec Limited,
Main Street, Ballingarry, Co. Limerick.
Tel. 069-68144
Fax. 069-68360

Email: info@manutec.ie
Website: www.manutec.ie